

BETHANY ELC NEWSLETTER



7TH OF FEBRUARY 2023
TERM 1 WEEK 1



Welcome to our first newsletter of 2023! It has been so wonderful getting to know our new families during our transition visits over the past few weeks. Every fortnight, we will send out a newsletter to update you & your family on all that is going on in our ELC, including with some ways you can be involved in your child's learning. Please read below for some reminders and instructions as we head into this term together.

Please ensure your child applies sunscreen prior to their arrival to the ELC. We reapply every two hours from the assumption of an 8am application. We also ask that you always pack labelled spare clothes in your child's bag, just in case!

You should have also received an invitation to Storypark. Please feel free to invite any family members to Storypark who you would like to have access to your child's learning! Each week, we will publish a whole group story to update you on the learning all of our children have been participating in together for that week.

Please also note the following for pick up and drop off:

- Where possible, please have only one adult complete pick up/drop off.
- Only adults are to use the coded gate (please do not tell the code to anyone under the age of 18).
- Entry and exit is via Byron Bay Drive only.
- All adults must have their own log in. Please add any person doing pick up or drop off to your Storypark Manage account.

We are also so excited to announce our upcoming ELC Families Twilight Picnic! This will be happening on Tuesday of Week 3 (21/2) from 5.00-6.15pm. Please refer to the attached invitation for more details and to RSVP by Thursday of next week (16/2).

Blessings,
Emily Bondarenko - ELC Director

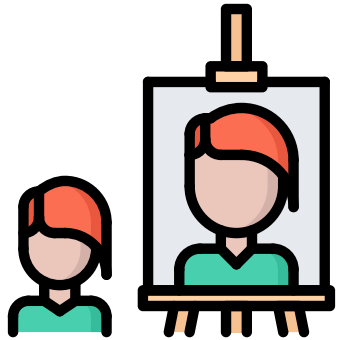
OUR LEARNING

Hi ELC friends,

You can use our ELC newsletter to show your family what we have been learning together at the ELC!

We are starting to draw our self portraits by looking at ourselves in the mirror.

What is one thing you notice about yourself when you look in the mirror?



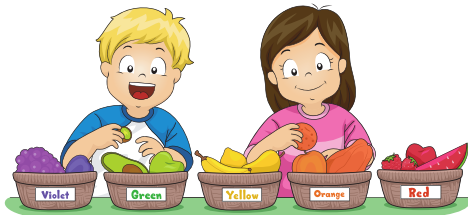
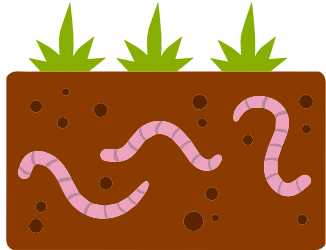
This week we will be seeing how tall we are!

Can you tell someone in your family how many apples tall you are?

OUR LEARNING

We are learning about and starting to set up our worm farm this week.

Can you tell someone one thing you learnt about worms this week?



We are starting to learn about sorting through a special nature hunt!

Can you show someone in your family how you can sort your toys?

This week in devotions we are learning about how awesome it is that God made us all different!

What is something about you that is different from our ELC friends?



OTHER INFORMATION

Communication:

Each child has their own pocket in the foyer where you will find notices. Please remember to check this each day your child is in ELC, please also check Storypark for regular updates of our daily activities, and your emails for ongoing communication.

We understand you may need to contact the ELC other times throughout the day which you are welcome to do via email: elc@bethany.sa.edu.au, or phone: 8283 0000.



1. Run around in the rain
2. Play hide and seek in a garden
3. Lie on your back and watch the clouds



Important Dates in Term 1:

Twilight Family Picnic	Week 3 Tue (21/2)
Adelaide Cup (ELC Closed)	Week 6 Mon (13/3)
Come and Play	Week 7 Tue-Thu (21/3-23/3)
Good Friday (ELC Closed)	Week 9 Fri (7/4)
Easter Monday (ELC Closed)	Week 10 Mon (10/4)

